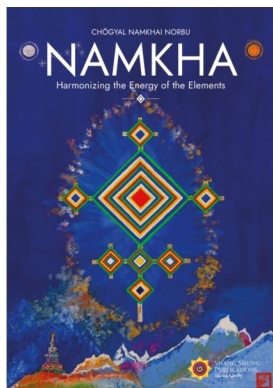
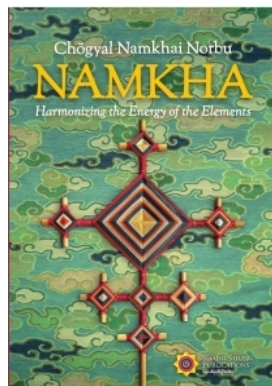


Explanations for Namkha calculations

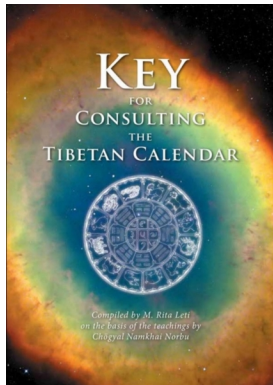
Preparing Namkha's are explained in the following books



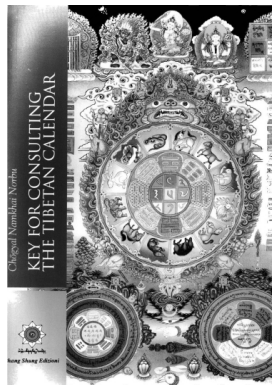
Latest edition



No longer available



Latest edition



No longer available

which are available at Shang Shung publications
<https://shangshungpublications.com>

Tibetan calendar explained

The year start at different times relative to the western calendar. Months identified by Element, Sign and number can be repeated and Tibetan days also identified by Element, Sign and number, 30 in a month, can be omitted and doubled. The Tibetan calendar is a so called luni-solar one.

Solar day

The basic unit of time is the solar day (nyin zhag) which starts at daybreak (nam langs, pratyūṣa). The most common definition for this time is when one is able to see the lines on the palms of the hands. Calculations based on this text makes clear that mean daybreak occurs at 5AM L.M.S.T (Local Mean Solar Time) seven hours before the mean Sun crosses the meridian at noon.

Each solar day is therefore equal in length and each is assigned a number. 0 Saturday, 1 Sunday, 2 Monday, 3 Tuesday, 4 Wednesday, 5 Thursday and 6 Friday.

Lunar month / day

A lunar month (tshes-zla) starts at New moon and incorporates 30 lunar days (tshes zhag) where the first one starts with the new moon (Sun and Moon are in conjunction each having the same longitude). The second day starts when the Sun and Moon are 12° apart. The third day when they are 24° apart, etc. Lunar days vary in length between 21.5 and 25.7 hours.

Tibetan day count

The first day of a Tibetan month is the solar day from 5AM till 5 AM next day where the new moon is before 5AM.

E.g. Lhasa new moon 20220303 01:35:55 so Tibetan day 1 starts this day.

Normal day

- 20220303 day count 1 moon rise Lhasa 08:52 which gives the next day 20220304 day count 2

Omitted day

- 20220321 day count 18 moon rise Lhasa 23:22 which gives the next day 20220322 day count 19
- 20220322 day count 19 no moon rise which gives an omitted day 20
- 20220323 day count 21 moon rise Lhasa 00:29 which gives the next day 20220324 day count 22

Double day

- 20220312 day count 10 moon rise Lhasa 14:21 and moon set 04:11 so the next day 20220313 has day count 11
- 20220313 day count 11 First moon rise Lhasa 15:15 and moon set 05:01 so the next day 20220314 has the same day count (moon set after 05:00)
- 20220314 day count 11 Second moon rise Lhasa 16:12 and moon set 05:47 so the next day 20220315 has day count 12

Calendars

There are two types of calendars. The astrological and the calendar year.

The astrological year starts at day 1 of the Tiger month (month 11 of calendar year).

The calendar year starts at day 1 of the Dragon month.

The day is from 05:00 till the next day 05:00.

If you choose for "Use local time" there will be a recalculation for Lhasa time.

Remember as the calendar is calculated for Tibet Lhasa time and all other calculations are based on Tibetan astrology you better recalculate the birth time to Lhasa time. The website automatically adjusts for the correct Tibetan day. Also all calculations are automatically adjusted for the correct date and time. E.g. 19761221 04:59 gives for the astrological year 1976, month 12 and day 29 where at 05:00 it will give year 1977, month 1 and day 1.

Year sign and element

20130614 09:30

The year sign (lo) and element can easily be calculated if you know a certain year and as we do know that the year 1024 (middle row) is a Wood – Mouse year we start from here.

Even years are male and Odd years are female.

Sign year

$(2013 - 1024) / 12 = 82$ remainder is 5.

Using the remainder start at 0 = Mouse, 1 = Ox, 2 = Tiger, 3 = Rabbit, 4 = Dragon, 5 = Snake, 6 = Horse, 7 = Sheep, 8 = Monkey, 9 = Rooster, 10 = Dog, 11 = Pig.

So at 5 we find Sign = Snake.

Element year

$(2013 - 1024) / 10 = 98$ remainder is 9.

Using the remainder start at 0 = Wood, 1 = Wood, 2 = Fire, 3 = Fire, 4 = Earth, 5 = Earth, 6 = Metal, 7 = Metal, 8 = Water, 9 = Water, 10 = Water.

So at 9 we find Element = Water.

Month sign and element

20130614 09:30

Once you know the year (Snake) you can find the month sign (daba) and element.

The month signs are always, Calendar/Astrological year month
E.g. the 5th/7th month of 2013 a Water Snake year.

Sign month

month 1 / 3 = Dragon, 2 / 4 = Snake, 3 / 5 = Horse,
4 / 6 = Sheep, 5 / 7 = Monkey, 6 / 8 = Rooster, 7 / 9 = Dog,
8 / 10 = Pig, 9 / 11 = Mouse, 10 / 12 = Ox, 11 / 1 = Tiger and
12 / 2 = Rabbit.

So for month 5/7 sign is Monkey

Element month

The month element depends on the element of the year.

The year starts at the 11/1st Tibetan month (Tiger) of the previous year. The element of this month is the child of the year element which for this example Water year is Wood.

So Wood is used for month 11/1 and 12/2 (Tiger and Rabbit).

Fire the child of Wood is used for month 1/3 and 2/4 (Dragon and Snake). Earth the child of Fire is used for month 3/5 and 4/6 (Horse and Sheep). Metal the child of Earth is used for month 5/7 (Monkey).

So for month 5/7 element is Metal

Day sign and element

20130614 09:30

Once you know the month (Metal Monkey) you can find the day sign (zhag) and element.

Care has to be taken to use the correct day as sometimes days are omitted and sometimes days are doubled.

E.g. day 6 of month 5/7 Metal male Monkey of year 2013.

(For month 5/7 day 6 June 14th 2013 there are no missing or doubled days before day 21).

It is important to know the gender of the month to find the correct day sign as for the male month the first day sign starts with Tiger and the first day sign for female month starts with Monkey. So as this is male month we start

Sign day

Tiger = 1, Rabbit = 2, Dragon = 3, Snake = 4, Horse = 5 and Sheep = 6 is the sign.

Element day

Start with the child of the month element. In this example month Metal so start with Water.

Water = 1, Wood = 2, Fire = 3, Earth = 4, Metal = 5 and Water = 6 which is the day element.

The following rules exist to find the correct day sign and element.

1. The element of the first day in the month is the child of the month element. E.g. day 1 in a Wood month element is Fire, day 2 Earth, day 3 Metal, etc.
2. The day element changes every day in the sequence Wood, Fire, Earth, Metal, Water.

3. The sign of the first day in the male month's (1,3,5,7,9,11) start with Tiger. E.g. Tiger day 1, Rabbit day 2, etc.
4. The sign of the first day in the female month's (2,4,6,8,10,12) start with Monkey. E.g. Monkey day 1, Rooster day 2, etc.
5. The day sign changes every day in the sequence Tiger, Rabbit, Dragon, etc for a male month and Monkey, Rooster, dog, etc for a female month.
6. When there is a double day the second day has the same sign and element as the first day. E.g. 20130319 Day 8F Water Rabbit and 20130320 Day 8S Water Rabbit.
7. When a day is omitted the normal cycle continues. E.g. 20130307 Day 25 Fire Tiger, day 26 omitted (Earth – Rabbit) and 20130308 Day 27 Metal Dragon.

Hour sign and element

Once you know the day you can find the hour sign (dus) and element.

Important to know is that a Tibetan day start at 05:00 and that every two hours have assigned signs

Hour	Sign	Tibetan name	
05:00 – 06:59	Rabbit	Nam langs	daybreak
07:00 – 08:59	Dragon	Nyi shar	sunrise
09:00 – 10:59	Snake	Nyi dros	mid-morning
11:00 – 12:59	Horse	Nyi phyed	noon
13:00 – 14:59	Sheep	Phyed yol	mid noon
15:00 – 16:59	Monkey	Nyi myur	late afternoon
17:00 – 18:59	Rooster	Nyi nub	sunset
19:00 – 20:59	Dog	Sa srod	twilight
21:00 – 22:59	Pig	Srod 'khor	evening
23:00 – 00:59	Mouse	Nam phyed	midnight
01:00 – 02:59	Ox	Phyed yol	mid noon
03:00 – 04:59	Tiger	Tho rangs	pre dawn

Hour sign

E.g. 20130614 09:30.

The sign is Snake (09:00-10:59)

Hour element

The first element of the hour is the child of the day element.

Then every two hours the element will change.

Start with the child of the day element. In this example Wood is the child of day element Water.

Wood = 05:00, Fire = 07:00, Earth = 09:00 which is the hour element.

Hour	Day element				
	Wood	Fire	Earth	Metal	Water
05:00 – 06:59	Fire	Earth	Metal	Water	Wood
07:00 – 08:59	Earth	Metal	Water	Wood	Fire
09:00 – 10:59	Metal	Water	Wood	Fire	Earth
11:00 – 12:59	Water	Wood	Fire	Earth	Metal
13:00 – 14:59	Wood	Fire	Earth	Metal	Water
15:00 – 16:59	Fire	Earth	Metal	Water	Wood
17:00 – 18:59	Earth	Metal	Water	Wood	Fire
19:00 – 20:59	Metal	Water	Wood	Fire	Earth
21:00 – 22:59	Water	Wood	Fire	Earth	Metal
23:00 – 00:59	Wood	Fire	Earth	Metal	Water
01:00 – 02:59	Fire	Earth	Metal	Water	Wood
03:00 – 04:59	Earth	Metal	Water	Wood	Fire

Calendar example

Tibetan calendar

19761221 21st December 02:29 in India Dharamsala (04:59 Lhasa)

Year: **1976** Fire Dragon Mewa White 6

Month: **10** Earth Ox Mewa Blue 3

Day: **29** Fire Mouse Mewa White 8

Hour: 04:59 Metal Tiger Mewa Red 7

One minute later

19761221 21st December 02:30 in India Dharamsala (05:00 Lhasa) gives

Year: **1976** Fire Dragon Mewa White 6

Month: **11** Earth Tiger Mewa Black 2

Day: **1** Metal Tiger Mewa White 1

Hour 05:00 Water Rabbit Mewa White 1 (Day 30 in month 10 is an omitted day).

Tibetan astrological calendar

19761221 21st December 02:44 in Nepal Kathmandu (04:59 Lhasa)

Year: **1976 Fire Dragon** Mewa **White 6**

Month: **12** Earth Ox Mewa Blue 3

Day: **29** Fire Mouse Mewa White 8

Hour: 04:59 Metal Tiger Mewa Red 7

One minute later

19761221 21st December 02:45 in Nepal Kathmandu (05:00 Lhasa) gives

Year: **1977 Fire Snake** Mewa **Yellow 5**

Month: **1** Earth Tiger Mewa Black 2

Day: **1** Metal Tiger Mewa White 1

Hour: 05:00 Water Rabbit Mewa White 1.

For calendars see www.tibastro.be calendars.

Namkha Element calculations

For calculations elements are given the following values:

Wood = 0, Fire = 1, Earth = 2, Metal = 3 and Water = 4

For Year, Month, Day and Hour the same methods are used.

(see: <http://www.tibastro.be/Element/FiveCat>) but you can also use the following table.

Element	Sign	Life force srog	Body lus	Power dbangthang	Luck klung rta	Life soul la
Wood	Mouse	Water	Metal	Wood	Wood	Metal
Wood	Ox	Earth	Metal	Wood	Water	Fire
Fire	Tiger	Wood	Fire	Fire	Metal	Water
Fire	Rabbit	Wood	Fire	Fire	Fire	Water
Earth	Dragon	Earth	Wood	Earth	Wood	Fire
Earth	Snake	Fire	Wood	Earth	Water	Wood
Metal	Horse	Fire	Earth	Metal	Metal	Wood
Metal	Sheep	Earth	Earth	Metal	Fire	Fire
Water	Monkey	Metal	Metal	Water	Wood	Earth
Water	Bird	Metal	Metal	Water	Water	Earth
Wood	Dog	Earth	Fire	Wood	Metal	Fire
Wood	Pig	Water	Fire	Wood	Fire	Metal
Fire	Mouse	Water	Water	Fire	Wood	Metal
Fire	Ox	Earth	Water	Fire	Water	Fire
Earth	Tiger	Wood	Earth	Earth	Metal	Water
Earth	Rabbit	Wood	Earth	Earth	Fire	Water
Metal	Dragon	Earth	Metal	Metal	Wood	Fire
Metal	Snake	Fire	Metal	Metal	Water	Wood
Water	Horse	Fire	Wood	Water	Metal	Wood
Water	Sheep	Earth	Wood	Water	Fire	Fire
Wood	Monkey	Metal	Water	Wood	Wood	Earth
Wood	Bird	Metal	Water	Wood	Water	Earth
Fire	Dog	Earth	Earth	Fire	Metal	Fire
Fire	Pig	Water	Earth	Fire	Fire	Metal
Earth	Mouse	Water	Fire	Earth	Wood	Metal
Earth	Ox	Earth	Fire	Earth	Water	Fire
Metal	Tiger	Wood	Wood	Metal	Metal	Water
Metal	Rabbit	Wood	Wood	Metal	Fire	Water
Water	Dragon	Earth	Water	Water	Wood	Fire
Water	Snake	Fire	Water	Water	Water	Wood
Wood	Horse	Fire	Metal	Wood	Metal	Wood
Wood	Sheep	Earth	Metal	Wood	Fire	Fire

Element	Sign	Life force srog	Body lus	Power dbangthang	Luck klung rta	Life soul la
Fire	Monkey	Metal	Fire	Fire	Wood	Earth
Fire	Bird	Metal	Fire	Fire	Water	Earth
Earth	Dog	Earth	Wood	Earth	Metal	Fire
Earth	Pig	Water	Wood	Earth	Fire	Metal
Metal	Mouse	Water	Earth	Metal	Wood	Metal
Metal	Ox	Earth	Earth	Metal	Water	Fire
Water	Tiger	Wood	Metal	Water	Metal	Water
Water	Rabbit	Wood	Metal	Water	Fire	Water
Wood	Dragon	Earth	Fire	Wood	Wood	Fire
Wood	Snake	Fire	Fire	Wood	Water	Wood
Fire	Horse	Fire	Water	Fire	Metal	Wood
Fire	Sheep	Earth	Water	Fire	Fire	Fire
Earth	Monkey	Metal	Earth	Earth	Wood	Earth
Earth	Bird	Metal	Earth	Earth	Water	Earth
Metal	Dog	Earth	Metal	Metal	Metal	Fire
Metal	Pig	Water	Metal	Metal	Fire	Metal
Water	Mouse	Water	Wood	Water	Wood	Metal
Water	Ox	Earth	Wood	Water	Water	Water
Wood	Tiger	Wood	Water	Wood	Metal	Water
Wood	Rabbit	Wood	Water	Wood	Fire	Water
Fire	Dragon	Earth	Earth	Fire	Wood	Fire
Fire	Snake	Fire	Earth	Fire	Water	Wood
Earth	Horse	Fire	Fire	Earth	Metal	Wood
Earth	Sheep	Earth	Fire	Earth	Fire	Fire
Metal	Monkey	Metal	Wood	Metal	Wood	Earth
Metal	Bird	Metal	Wood	Metal	Water	Earth
Water	Dog	Earth	Water	Water	Metal	Fire
Water	Pig	Water	Water	Water	Fire	Metal

Year

the elements are not the same 19761221 05:00

	Calendar	Astrological	
	Fire Dragon	Fire Snake	Tibetan
Life	Earth	Fire	srog
Body	Earth	Earth	lus
Capacity	Fire	Fire	dbang thang
Fortune	Wood	Water	klung rta

Month

	Calendar	Astrological	
	Earth Tiger	Earth Tiger	Tibetan
Life	Wood	Wood	srog
Body	Earth	Earth	lus
Capacity	Earth	Earth	dbang thang
Fortune	Metal	Metal	klung rta

Day

	Calendar	Astrological	
	Metal Tiger	Metal Tiger	Tibetan
Life	Wood	Wood	srog
Body	Wood	Wood	lus
Capacity	Metal	Metal	dbang thang
Fortune	Metal	Metal	klung rta

Hour

	Calendar	Astrological	
	Water Rabbit	Water Rabbit	Tibetan
Life	Wood	Wood	srog
Body	Metal	Metal	lus
Capacity	Water	Water	dbang thang
Fortune	Fire	Fire	klung rta

see: Namkha harmonizing Energy of the elements 2021, 2022
and <https://www.tibastro.be/Element/FiveCat>

Namkha Mewa calculations

For Year, Month, Day and Hour the same methods are used.

White 1, White 6 and White 8 are Metal (white 3)

Black 2 and Blue 3 are Water (blue 4)

Green 4 is Wood (green 0)

Yellow 5 is Earth (yellow 2)

Red 7 and Red 9 are Fire (red 1)

Year Mewa

The year (month, day and hour) Body Mewa is defined by the element, sign and the metreng used.

1684 – 1743, 1864 – 1923 Upper metreng (top)

1744 – 1803, 1924 – 1983 Intermediate metreng (middle)

1804 – 1863, 1984 – 2043 Lower metreng (bottom)

E.g. for a Fire Dragon year

In the Upper metreng (1916) the Mewa is Blue 3.

In the Intermediate metreng (1976) the Mewa is White 6

In the Lower metreng (2036) the Mewa is Red 9

An easy method to calculate the body Mewa is to use a year with a Mewa you know.

E.g. 1687 which has Mewa Red 7.

Take the year of interest minus 1687 add one and divide by 9.

The remainder is used to find the correct Mewa. Count from Red 7.

E.g.

Mewa for 1942 is $(1942 - 1687 + 1) / 9 = 28$ remainder 4. Start with 1=Red 7, 2 =White 6, 3=Yellow 5 and 4=Green 4 which is the Mewa for 1942.

If you like to start with Mewa's White 1 use the year 1684 which has Mewa White 1.

Use $(1942 - 1684 + 1)/9 = 28$ remainder 7 Start with 1 =White 1, 2= Red 9, 3= White 8, 4=Red 7, 5=White 6, 6=Yellow 5 and 7=Green 4 which is the Mewa for 1942.

E.g. Year Mewa

for 1976 1221 05:00 the mewa's are not the same

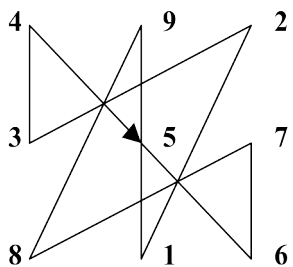
	Calendar 1976	Astrological 1977
Body	White 6 / Metal	Yellow 5 / Earth

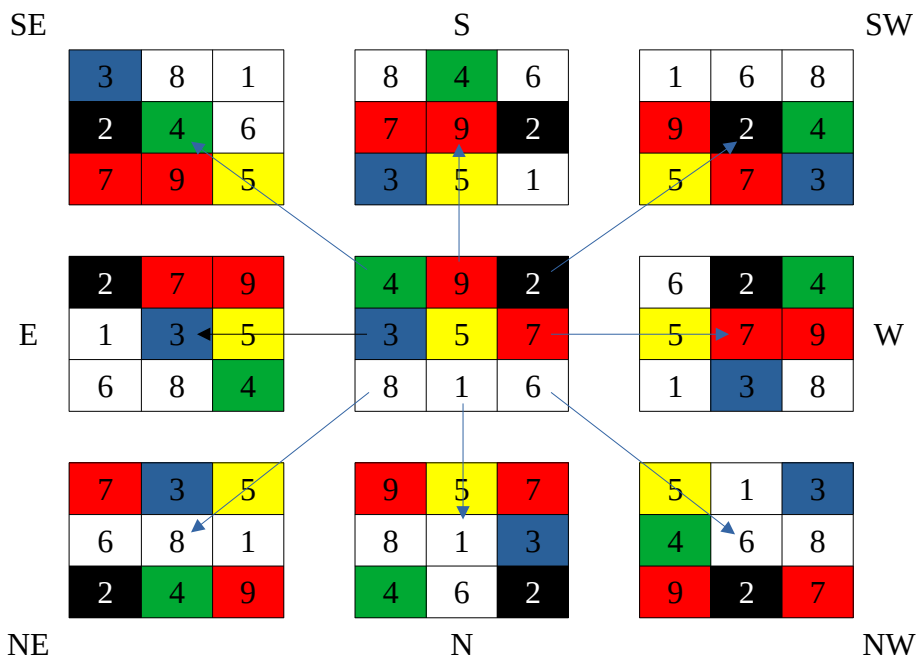
Life and Capacity Mewa

There are two methods to calculate the Life and Capacity Mewa implemented. The here called "Traditional" and "Local" version.

Remember the position of the Mewa changes every year/month and day in the sequence 123456789.

SE	South			SW
	4	9	2	
East	3	5	7	West
	8	1	6	
NE	North			NW





Traditional Mewa calculation

As the Mewa's continually change from 1 to 9 it is easy to find the Life and Capacity Mewa as they depend on the Body (year) Mewa.

The Life Mewa is 4 places before the Body Mewa.

E.g. for a body Mewa Yellow 5 start at 5 and go 4 places to the left (before) and you find Black 2.

Sequence ...8912345678912... (start at a count of 1). Or take the mewa which is in the SW.

The Capacity Mewa is 4 places after the Body Mewa.

E.g. for a Body Mewa Yellow 5 start at 5 and go 4 places to the right (after) and you find White 8.

Sequence ...8912345678912... (start at a count of 1). Or take the mewa which is in the NE.

Local Mewa calculation

Here the calculations for the Life and Capacity Mewa are completely opposite as in the traditional way.

The Life Mewa is 4 places after the Body Mewa.

E.g. for a Body Mewa Yellow 5 start at 5 and go 4 places to the right (after) and you find White 8.

Sequence ...891234**5**678912... (start at a count of 1). Or take the mewa which is in the NE.

The Capacity Mewa is 4 places before the Body Mewa.

E.g. for a Body Mewa Yellow 5 start at 5 and go 4 places to the left (before) and you find Black 2.

Sequence ...891**2**34**5**678912... (start at a count of 1). Or take the mewa which is in the SW.

E.g. Life / Capacity Mewa

Life / Capacity Mewa

for 19761221 05:00 the mewa's are not the same

	Calendar 1976	Astrological 1977
Body	White 6 / Metal	Yellow 5 / Earth
Life	Blue 3 / Water	Black 2 / Water
Capacity	Red 9 / Fire	White 8 / Metal

Fortune Mewa (luck) calculations.

There are more methods to calculate the fortune Mewa element. There are two methods implemented. Here called "Traditional" and "Simplified" version.

Traditional fortune (luck) calculations.

First look after the birth-year sign to find the key for the next step.

- For a Tiger, Horse or Dog the next step starts with Metal – Monkey
- For a Pig, Sheep or Rabbit the next step starts with Fire – Snake
- For a Bird, Ox or Snake the next step starts with Water – Pig
- For a Mouse, Dragon or Monkey the next step starts with Wood – Tiger

Find the key year in the same metreng as the birth-year with the key found in the previous step.

The vitality Mewa of this year is the Luck Mewa.

E.g. for 19761221 05:00

Calendar year 1976 Fire Dragon use Wood Tiger 1974 (mewa white 8) which vitality Mewa is Yellow 5

Astrological year 1977 Fire Snake use Water Pig 1983 (mewa white 8) which vitality Mewa is Yellow 5

	Calendar 1976	Astrological 1977
Body	White 6 / Metal	Yellow 5 / Earth
Fortune	Yellow 5 / Earth	Yellow 5 / Earth

Simplified fortune (luck) calculations.

Only use the Signs (not the combination of element and sign).

- For a Tiger, Horse or Dog find the **Monkey** year before the Body Mewa year
- For a Pig, Sheep or Rabbit find the **Snake** year before the Body Mewa year
- For a Bird, Ox or Snake find the **Pig** year before the Body Mewa year

- For a Mouse, Dragon or Monkey find the **Tiger** year before the Body Mewa year

In practice this means

- For a Tiger, Pig, Snake or Monkey add 6 to the Body Mewa of the sign
- For a Horse, Rabbit, Bird or Mouse add 10 to the Body Mewa of the sign
- For a Dog, Sheep, Ox or Dragon add 2 to the Body Mewa of the sign

In case that the result is more than 9 subtract 9

E.g. for 19761221 05:00

Calendar year 1976 Fire Dragon Body Mewa is White 6 add 2 which gives White 8

Astrological year 1977 Fire Snake Body Mewa is Yellow 5 add 6 which gives (11 – 9) Black 2

	Calendar 1976	Astrological 1977
Body	White 6 / Metal	Yellow 5 / Earth
Fortune	White 8 / Metal	Black 2 / Water

See: www.tibastro.be → Start → Mewa → Birth Mewa

Month Mewa

Method 1

The following is a method described by Jamgon Kongtrul in rTsis kyi bstan bcos nyer mkho bum bzang las skar skar rtsis kyi lag len..... vol.14

To calculate a Mewa for a particular month the first thing necessary is to define an epoch. Here we use 1807. For the

month we have to remember that when month 11 or 12 is used the calculation is for the next year astrological month 1 and 2 (actual month-count used is from 0 till 11). An intercalary month has the same Mewa as the delayed month. Every three years the same month sequence appears.

Formula

$$(((\text{YearToFind}-1807) * 12) + (\text{MonthToFind}-1) + 4) / 9$$
 gives a quotient and a remainder.

Using the remainder we find:

0=White 1, 1=Red 9, 2=White 8, 3=Red 7, 4=White 6, 5=Yellow 5, 6=Green 4, 7=Blue 3, 8=Black 2.

When you replace the remainder 0 with 9 you can use 10-Remainder=Mewa

E.g.

Astrological MonthToFind 1 in YearToFind 1995.

Use 1994 and 11 (previous year month 11)

$$(((1994-1807)*12) + (11-1)+4)/9$$

$$(2244+14)/9$$

$$2258/9=250 \text{ remainder } 8 \text{ is Black } 2 (10-8=2)$$

Astrological MonthToFind 2 in YearToFind 1995.

Use 1994 and 12 (previous year month 12)

$$(((1994-1807)*12) + (12-1)+4)/9$$

$$(2244 +15)/9$$

$$2259/9=251 \text{ remainder } 0 \text{ is White } 1 (10-9=1)$$

Astrological MonthToFind 3 in YearToFind 1995.

Use 1995 and MonthToFind - 2 = 1 for MonthToFind

$$(((1995-1807)*12) + (1-1)+4)/9$$

$$(2256 +4)/9$$

$$2260/9=251 \text{ remainder } 1 \text{ is Red } 9 (10-1=9)$$

		Month Mewa for years			Seasons
Astrological month	Calendar month	Tiger Snake Monkey Pig	Rabbit Horse Rooster Mouse	Dragon Sheep Dog Ox	
1 Tiger	11 *	Black 2	White 8	Yellow 5	early spring
2 Rabbit	12 *	White 1	Red 7	Green 4	mid spring
3 Dragon	1	Red 9	White 6	Blue 3	late spring
4 Snake	2	White 8	Yellow 5	Black 2	early summer
5 Horse	3	Red 7	Green 4	White 1	mid summer
6 Sheep	4	White 6	Blue 3	Red 9	late summer
7 Monkey	5	Yellow 5	Black 2	White 8	early autumn
8 Rooster	6	Green 4	White 1	Red 7	mid autumn
9 Dog	7	Blue 3	Red 9	White 6	late autumn
10 Pig	8	Black 2	White 8	Yellow 5	early winter
11 Mouse	9	White 1	Red 7	Green 4	mid winter
12 Ox	10	Red 9	White 6	Blue 3	late winter

* month 11 and 12 are from the previous year

1. The Mewas Black 2, White 8, Yellow 5 and Black 2 are the Mewas for the early month of the seasons for the Tiger, Snake, Monkey and Pig year
2. The Mewas Red 7, Green 4, White 1 and Red 7 are the Mewas for the mid month of the seasons for the Rabbit, Horse, Rooster and Mouse year
3. The Mewas Blue 3, Red 9, White 6 and Blue 3 are the Mewas for the late month of the seasons for the Dragon, Sheep, Dog and Ox year

Method 2

Pointed out by Migmar Tsering, in the Vaidurya dkar po (256, 15) it says:

1. The three [Mewas] black 2, yellow 5, and white 8 are the birth Mewa of each of the early months of the four seasons (ra ba bzhi: Tiger, Snake, Monkey, Boar).
 2. The three [Mewas] white 1, green 4, and red 7 are the birth Mewa of each of the second months of the four seasons ('bring po bzhi: Hare, Horse, Bird, Mouse).
 3. The three [Mewas] blue 3, white 6, and red 9 are the birth Mewa of each of the late months of the four seasons (tha chung bzhi: Dragon, Sheep, Dog, Ox)."
 4. Here it is implied that the calculation proceeds in a reverse order (lugs ldog).
- Unfortunately there is no indication which mewa is applied to which early season, second month and late month and there are three Mewas for 4 seasons.
 - There is no information about the Mewas for other seasons (month).
 - There is no information about the seasons.
 - In the table above the seasons are added as given in Tibetan Elemental Divination Paintings: Illuminated Manuscripts from The White Beryl of Sangs-rgyas rGya-mtsho, with the Moonbeams Treatise of Lo-chen Dharmaśrī. Commentary and translations By Gyurme Dorje.

Logically arranging the Mewas
for Tiger, Snake, Monkey, Boar the month in early Season
Black 2 month 1 early spring
White 8 month 4 early summer
Yellow 5 month 7 early autumn
Black 2 month 10 early winter

for Hare, Horse, Bird, Mouse the month in mid Season
Red 7 month 2 mid spring
Green 4 month 5 mid summer
White 1 month 8 mid autumn
Red 7 month 11 mid winter
for Dragon, Sheep, Dog, Ox the month in late Season
Blue 3 month 3 late spring
Red 9 month 6 late summer
White 6 month 9 late autumn
Blue 3 month 12 late winter
Which gives you the table as above where there is a reverse order.

Final Month Mewa calculations

Once the Month mewa is found (Body Mewa) the Capacity, Life and Fortune Mewa can be found as described by Life and Capacity Mewa and Fortune Mewa.

Day Mewa

Forward day Mewa

The day Mewa's have an ascending order. Be aware of omitted and double days.

The first day of the Tiger, Snake, Monkey or Pig month starts with White 1, followed by Black 2, Blue 3, etc.

The first day of the Rabbit, Horse, Bird or Mouse month starts with Green 4, followed by Yellow 5, White 6, etc.

The first day of the Dragon, Sheep, Dog or Ox month starts with Red 7, followed by White 8, Red 9, etc.

Reverse day Mewa

The reverse day Mewa's (only used for females) have a descending order. Be aware of omitted and double days.

The first day of the Tiger, Snake, Monkey or Pig month starts with White 1, followed by Red 9, White 8, etc.

The first day of the Rabbit, Horse, Bird or Mouse month starts with Red 7, followed by White 6, Yellow 5, etc.

The first day of the Dragon, Sheep, Dog or Ox month starts with Green 4, followed by Blue 3, Black 2, etc.

The reverse day Mewa's are only used for FEMALES.

Final Day Mewa calculations

Once the Day mewa is found (Body Mewa) the Capacity, Life and Fortune Mewa can be found as described by Life and Capacity Mewa and Fortune Mewa.

Hour mewa

There are 12 double hours starting at 05:00 with sign Rabbit followed at 07:00 with Dragon, etc.

Once you know the day you can find the hour sign and element.

See: www.tibastro.be → Start → Element → General

Important to remember is that a Tibetan day start at 05:00 and that every two hours have a sign assigned.

Also recalculate your time of birth to Tibet Lhasa time for a correct hour mewa.

As there are 9 mewa's the double hours are split into 3 time slots (each 40 minutes) giving a total of 36 (12×3) slots. Every 2 slots (80 minutes) are given the name of a sequential mewa where the first slot is the same as the day mewa.

Hours																	
Rabbit			Dragon			Snake			Horse			Sheep			Monkey		
1/3	2/3	3/3	1/3	2/3	3/3	1/3	2/3	3/3	1/3	2/3	3/3	1/3	2/3	3/3	1/3	2/3	3/3
Index 0		1		2		3		4		5		6		7		8	
Hours																	
Rooster			Dog			Pig			Mouse			Ox			Tiger		
1/3	2/3	3/3	1/3	2/3	3/3	1/3	2/3	3/3	1/3	2/3	3/3	1/3	2/3	3/3	1/3	2/3	3/3
Index 0		1		2		3		4		5		6		7		8	

Calculation: (or use the table below)

Find the index for the day mewa

Mewa Index

White1 0

Black2 1

Blue3 2

Green4 3

Yellow5 4

White6 5

Red7 6

White8 7

Red9 8

Add the time Mewa Index and look for the result.

Total time to start is hour 05:00 ($5 \times 6 = 300$)

Sign	time	Total time	Mewa Index
Rabbit 05:00	00-39	≥ 300	0
	40-79	≤ 379	
06:20	80-119	≥ 380	1
Dragon 07:00	00-39	≤ 459	
07:40	40-79	≥ 460	2
	80-119	≤ 539	

Sign	time	Total time	Mewa Index
Snake 09:00	00-39	>=540	3
	40-79	<=619	
10:20	80-119	>=620	4
Horse 11:00	00-39	<=699	5
	40-79	>=700	
11:40	80-119	<=779	
Sheep 13:00	00-39	>=780	6
	40-79	<=859	
14:20	80-119	>=860	7
Monkey 15:00	00-39	<=939	8
	40-79	>=940	
15:40	80-119	<=1019	
Rooster 17:00	00-39	>=1020	0
	40-79	<=1099	
18:20	80-119	>=1100	1
Dog 19:00	00-39	<=1179	2
	40-79	>=1180	
19:40	80-119	<=1259	
Pig 21:00	00-39	>=1260	3
	40-79	<=1339	
22:20	80-119	>=1340	4
Mouse 23:00	00-39	<=1419	5
	40-59	>=1420	
		<=1439	
00:00	60-79	>=0	
	80-119	<=59	

Sign	time	Total time	Mewa Index
Ox 01:00	00-39	≥ 60	6
	40-79	≤ 139	
02:20	80-119	≥ 140	7
Tiger 03:00	00-39	≤ 219	8
	40-79	≥ 220	
03:40	80-119	≤ 229	

E.g.

Day Mewa Green 4 index 3

Time 23:59 index 5

Total index $3 + 5 = 8$ which gives Red 9

If the sum of the indexes is ≥ 9 subtract 9

E.g.

Day Mewa Green 4 has index 3

Time 16:05 index 8

Total index $8 + 3 = 11$ so subtract 9

$11 - 9 = 2$ which gives Blue 3

	Hour Mewa change								
Day	05:00	06:20	07:40	09:00	10:20	11:40	13:00	14:20	15:40
Mewa	17:00	18:20	19:40	21:00	22:20	23:40	01:00	02:20	03:40
White 1	White 1	Black 2	Blue 3	Green 4	Yellow5	White 6	Red 7	White 8	Red 9
Black 2	Black 2	Blue 3	Green 4	Yellow5	White 6	Red 7	White 8	Red 9	White 1
Blue 3	Blue 3	Green 4	Yellow5	White 6	Red 7	White 8	Red 9	White 1	Black 2
Green 4	Green 4	Yellow5	White 6	Red 7	White 8	Red 9	White 1	Black 2	Blue 3
Yellow5	Yellow5	White 6	Red 7	White 8	Red 9	White 1	Black 2	Blue 3	Green 4
White 6	White 6	Red 7	White 8	Red 9	White 1	Black 2	Blue 3	Green 4	Yellow 5
Red 7	Red 7	White 8	Red 9	White 1	Black 2	Blue 3	Green 4	Yellow5	White 6
White 8	White 8	Red 9	White 1	Black 2	Blue 3	Green 4	Yellow5	White 6	Red 7
Red 9	Red 9	White 1	Black 2	Blue 3	Green 4	Yellow5	White 6	Red 7	White 8

E.g.

For 20120625 09:30 Tibet Lhasa

Year 2012 Water male Dragon Mewa White 6, Month 5 Metal male Monkey, Day 6 Water Sheep

Hour Sign is Snake (09:00), Day Mewa is White 6

For the Hour Element start with the child of the day element.

For this example child of Water is Wood.

Wood = 05:00, Fire = 07:00, Earth = 09:00 which is the hour element. Hour Earth Snake.

For the Hour Mewa start with the index for White 6 (day mewa) which is 5. Add the hour index which is 3 totaling to 8 which is Red 9 (If the sum of the indexes is ≥ 9 subtract 9).

Year 2012 Water male Dragon, Month 7 Metal male Monkey, Day 6 Water Sheep, Hour 09:30 Earth Snake with Mewa Red 9.

Note: when the time of birth is before 05:00AM the previous day is used.

E.g. 20120625 04:30 Tibet Lhasa is the day before

Year 2012 Water male Dragon Mewa White 6, Month 5 Metal male Monkey, **Day 5** Metal Horse Mewa Yellow 5, Hour Wood Tiger Mewa Green 4.

Final Hour Mewa calculations

Once the Hour mewa is found (Body Mewa) the Capacity, Life and Fortune Mewa can be found as described by Life and Capacity Mewa and Fortune Mewa.

Example 1

Example for year, day and hour 06/25/2012 09:30 Tibet Lhasa time.

For male Astrological year 2012 / Calendar year 2012,
Traditional Mewa and Traditional Fortune.

Year 2012 Water male Dragon, Mewa White 6

Month 5/7 Metal male Monkey, Mewa White 8

Day 6 Water Sheep, Mewa White 6

Hour 09:30 Earth Snake, Mewa Red 9.

Year

2012 Water Dragon, Mewa White 6 see: www.tibastro.be

Start → Sign → Sign general

Life element: Earth (sign Dragon) see: Namkha harmonizing

Energy of the elements 2021, 2022

Body element: Water (sign Dragon element Water)

Capacity element: Water (element Water)

Fortune element: Wood (sign Dragon)

Body Year Mewa White 6 see: www.tibastro.be

Start → Mewa → General

Life Mewa Blue 3 is 4 places before the Body

Mewa ...8912345678912...

Capacity Mewa Red 9 is 4 places after the Body

Mewa ...8912345678912....

Fortune Mewa White 8 is Vitality Mewa of Wood Tiger 2034

Simple fortune Mewa White 6 + 2 (Dragon) = White 8.

Month

Month 5/7 Metal Male Monkey, Mewa White 8 (Month 5

Astrological year and month 7 Calendar year)

Life element: Metal (sign Monkey)

Body element: Wood (sign Monkey element Metal)

Capacity element: Metal

Fortune element: Wood

Body Month Mewa White 8

Life Mewa Yellow 5 is 4 places before the Body

Mewa ...8912345678912...

Capacity Mewa Black 2 is 4 places after the Body

Mewa ...8912345678912...

Fortune Mewa White 8 is Vitality Mewa of Wood Tiger 2034

Simple fortune Mewa White 8 + 6 (Monkey) = (14 - 9) =

Yellow 5.

Day

Day 6 Water Sheep, Mewa White 6

Life element: Earth (sign Sheep)

Body element: Wood (sign Sheep element Water)

Capacity element: Water (element Water)

Fortune element: Fire (sign Sheep)

Body Day Mewa White 6

Life Mewa Blue 3 is 4 places before the Body

Mewa ...8912345678912...

Capacity Mewa Red 9 is 4 places after the Body

Mewa ...8912345678912....

Fortune Mewa Yellow 5 is Vitality Mewa of Fire Snake 2037

Simple fortune Mewa White 6 + 2 (Sheep) = White 8

Hour

Hour 09:30 Earth Snake, Mewa Red 9

Life element: Fire (sign Snake)

Body element: Wood (sign Snake element Earth)

Capacity element: Earth (element Earth)

Fortune element: Water (sign Snake)

Body Hour Mewa Red 9

Life Mewa Red 6 is 4 places before the Body

Mewa ...8912345678912...

Capacity Mewa Blue 3 is 4 places after the Body

Mewa ...8912345678912....

Fortune Mewa White 8 is Vitality Mewa of Water Pig 2043

Simple fortune Mewa Red $9 + 6$ (Snake) = 15 - 9 = White 6

Relations

The elements of a Namkha can have the following relations to the Life rhombus or for the Mewa's to the Life Mewa rhombus. (if you use local mewa calculations the capacity mewa)

Element Life	Mother OOO	Child OX	Friend OO	Enemy XX	Same O or X
Wood	Water	Fire	Earth	Metal	Wood X
Fire	Wood	Earth	Metal	Water	Fire X
Earth	Fire	Metal	Water	Wood	Earth O
Metal	Earth	Water	Wood	Fire	Metal X
Water	Metal	Wood	Fire	Earth	Water O

Relations example

E.g. 2008 Earth – Mouse Life is Water Blue

Namkha Elements

Body	Fire	Relation to Life Water
Capacity	Earth	Friend
Fortune	Wood	Enemy
		Child

Namkha Mewa elements

Life	Red 7	Fire	Relation to Life Water
			Friend
			Relation to Mewa Life
Body	White 1	Metal	Friend
Capacity	Green 4	Wood	Mother
Fortune	White 8	Metal	Friend
Simple fort.	Black 2	Water	Enemy

Local Namkha Mewa elements

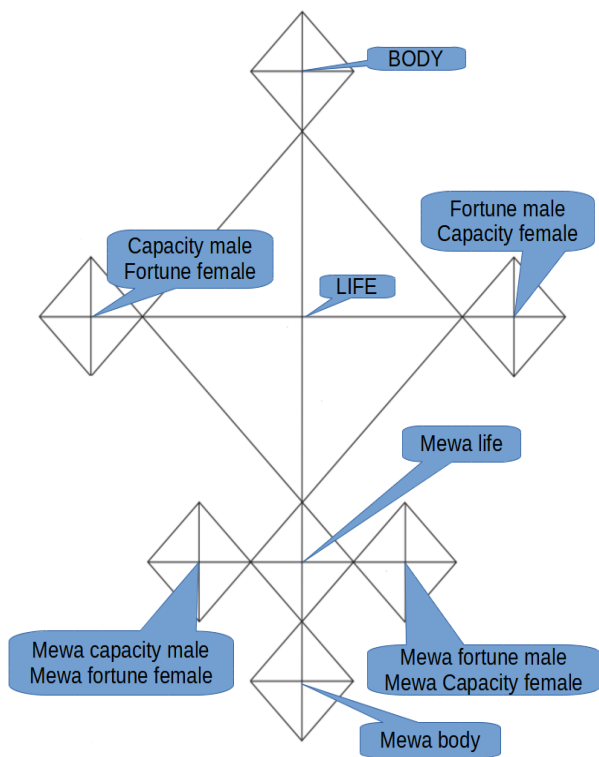
Life and Capacity are switched

Life	Green 4	Wood	Relation to Life	Water
			Child	
Body	White 1	Metal	Relation to Mewa	Life
			Enemy	
Capacity	Red 7	Fire	Child	
Fortune	White 8	Metal	Enemy	
Simple fort.	Black 2	Water	Mother	

see: www.tibastro.be

Start → Element → Elements compared

Namkha



For males Capacity is on the right side and Fortune on the left side.

For females the Capacity is on the left side and Fortune on the right side.

Life

The center of Life starts with the color of the element of the sign of the calculated year.

Wood – (green 0) for Tiger and Rabbit

Fire – (red 1) for Snake and Horse

Earth – (yellow 2) for Dragon, Sheep, Dog and Ox

Metal – (white 3) for Monkey and Rooster

Water – (blue 4) for Pig and Mouse

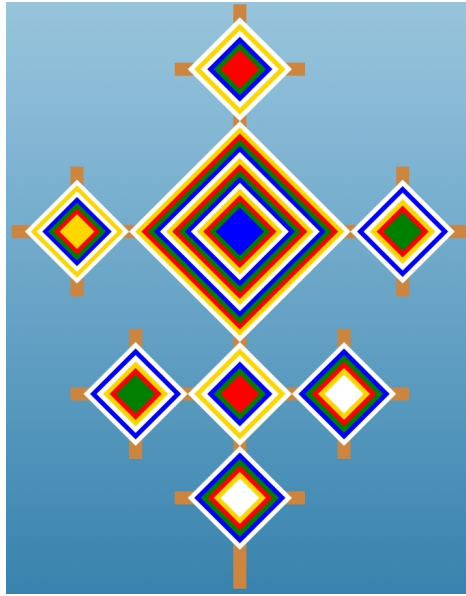
From the inside out there exists a child sequence.

E.g. an Earth Mouse year (2008) starts with Water (blue 4) followed by Wood (green 0), Fire (red 1), Earth (yellow 2) and Metal (white 3). This sequence repeats itself three times. The last color, in this example white 3, will be used to harmonize all other items of the Namkha.

For 2008 Earth Mouse the calculated elements for a Male are:

Life	Water	Blue
Body	Fire	Red
Capacity	Earth	Yellow
Fortune	Wood	Green
Mewa Life	Red7	Red
Mewa Body	White1	White
Mewa Capacity	Green4	Green
Mewa Fortune	White8	White

The Mewa's are calculated for a Male using the traditional way.



The Life sequences (from inside out) are:

Tiger and Rabbit:

Wood (green) – Fire (red) – Earth (yellow) – Metal (white) –
Water (blue)

Snake and Horse:

Fire (red) – Earth (yellow) – Metal (white) – Water (blue) -
Wood (green)

Dragon, Sheep, Dog and Ox:

Earth (yellow) – Metal (white) – Water (blue) - Wood (green) –
Fire (red)

Monkey and Rooster:

Metal (white) – Water (blue) - Wood (green) – Fire (red) -
Earth (yellow)

Pig and Mouse:

Water (blue) - Wood (green) – Fire (red) - Earth (yellow) -
Metal (white)

Body

Depending on the calculated body element the body will start with the element color (in this example Fire Red). The following colors depend on the relation with the Life element (in this example Fire is a Friend of Water) see: Harmonizing towards Life Enemy / Friend

Capacity

Depending on the calculated capacity element the body will start with the element color (in this example Earth Yellow). The following colors depend on the relation with the Life element (in this example Earth is an Enemy of Water) see: Harmonizing towards Life Enemy / Friend

Fortune

Depending on the calculated fortune element the body will start with the element color (in this example Wood Green). The following colors depend on the relation with the Life element (in this example Earth is a Child of Water) see: Harmonizing towards Life Child relation

Life Mewa

Depending on the calculated Life Mewa element the body will start with the element color (in this example Fire Red7). The following colors depend on the **relation with the Life element** (in this example Fire is a Friend of Water) see: Harmonizing towards Life Enemy / Friend

Capacity Mewa

Depending on the calculated Capacity Mewa element the body will start with the element color (in this example Wood Green4).

The following colors depend on the **relation with the Life Mewa** element (in this example Wood is the Mother of Fire) see: Harmonizing Mewa's Mother / Child / SameO / SameX

Fortune Mewa

Depending on the calculated Fortune Mewa element the body will start with the element color (in this example Metal White8).

The following colors depend on the **relation with the Life Mewa** element (in this example Metal is the Friend of Fire) see: Harmonizing Mewa's Enemy / Friend

Body Mewa

Depending on the calculated Body Mewa element the body will start with the element color (in this example Metal White1).

The following colors depend on the **relation with the Life Mewa** element (in this example Metal is the Friend of Fire) see: Harmonizing Mewa's Enemy / Friend

Relations and harmonizing

Harmonization is done by adding the last element of the Life rhombus to the Body, Capacity, Fortune and Life Mewa element sequence.

Special care has to be taken adding the harmonizing element to the Body Mewa, Capacity Mewa and Fortune Mewa as their relations are towards the Life Mewa.

Harmonizing towards Life

Explanation

In a Mother, Child, SameX or SameO relation the sequence from inside to outside is a child sequence.

Start with the calculated element and do all other elements.

E.g. start element followed by child sequence

Wood (green 0) – Fire (red 1) – Earth (yellow 2) – Metal (white 3) – Water (blue 4)

Fire (red) – Earth (yellow) – Metal (white) – Water (blue) - Wood (green)

Earth (yellow) – Metal (white) – Water (blue) - Wood (green) – Fire (red)

Metal (white) – Water (blue) - Wood (green) – Fire (red) - Earth (yellow)

Water (blue) - Wood (green) – Fire (red) - Earth (yellow) - Metal (white)

Mother relation

In a Mother relation the sequence from inside to outside is a child sequence.

In a mother relation the Harmonizing element is added.

E.g. 1942 a horse year the Life sequence starts with element Fire(1), followed by Earth(2), Metal(3), Water(4) and ends with Wood(0) which is the harmonizing element.

The calculated element for Body is Wood(0) which is a Mother relation to Life Fire(1).

Start with Wood(0), followed by the child sequence Fire(1), Earth(2), Metal(3), Water(4) and add Wood(0) the harmonizing element.

Child relation

In a Child relation the sequence from inside to outside is a child sequence.

In a child relation the element before the last element is added.

E.g. 1944 a Monkey year the Life sequence starts with element Metal (3), followed by Water (4), Wood (0), Fire (1) and ends with Earth (2) which is the harmonizing element.

The calculated element for Body is Water(4) which is a child relation to Metal(3).

Start with Water(4) followed by the child sequence Wood(0), Fire(1), Earth(2), Metal(3) and add Earth(2) the harmonizing element.

SameO SameX relation

In a SameX or SameO relation the sequence from inside to outside is a child sequence.

There is no need to add an element.

E.g. Pig year 1983 the harmonizing element is **Metal** (white 3) and the sequence for SameO Body Water(4) is:

Water (blue 4) - Wood (green 0) - Fire (red 1) - Earth (yellow 2) - Metal (white 3)

Enemy / Friend

In an enemy relation the sequence from inside to outside is a mother sequence.

Start with the calculated element and do all other elements.

E.g. start element followed by mother sequence

Wood (green) - Water (blue) - Metal (white) - Earth (yellow) - Fire (red)

Fire (red) - Wood (green) - Water (blue) - Metal (white) - Earth (yellow)

Earth (yellow) - Fire (red) - Wood (green) - Water (blue) - Metal (white)

Metal (white) - Earth (yellow) - Fire (red) - Wood (green) - Water (blue)

Water (blue) - Wood (green) - Fire (red) - Earth (yellow) - Metal (white)

When the **harmonizing element IS the same** as the last element in the life sequence the sequence is extended with two elements. The first one the next element in the mother direction and the second one the harmonizing element.

E.g. Pig year 1947 the harmonizing element is **Metal** (white 3) and the sequence for enemy Body relation Earth(2) is:
Earth (yellow 2) - Fire (red 1) - Wood (green 0) - Water (blue 4) - **Metal** (white 3) the next element will be Earth (yellow 2) followed by the harmonizing element Metal (white 3).

When the **harmonizing element IS NOT the same** just add the harmonizing element.

E.g. Pig year 1947 the harmonizing element is **Metal** (white 3) and the sequence for Friend Capacity or Fortune relation Fire(1) is:
Fire (red 1) - Wood (green 0) - Water (blue 4) - Metal (white 3) - Earth (yellow 2) the next element will be the harmonizing element Metal (white 3).

Note: Harmonizing Body, Capacity and Fortune and Mewa
Life to Life

Harmonizing element **Wood**

Life element **Fire**

See Note	Wo	Fi	Ea	Me	Wa	Wo	Fi	Ea	Me	Wa	Wo	Fi	Ea	Me	Wa
Mother	X	X	X	X	X	Wo									
Child			X	X	X	X	X	Wo							
SameO		X	X	X	X	X									
SameX		X	X	X	X	X									
	Wa	Me	Ea	Fi	Wo	Wa	Me	Ea	Fi	Wo	Wa	Me	Ea	Fi	Wo
Friend		X	X	X	X	X	Wo								
Enemy	X	X	X	X	X	Wa	Wo								

Harmonizing element **Fire**

Life element **Earth**

See Note	Wo	Fi	Ea	Me	Wa	Wo	Fi	Ea	Me	Wa	Wo	Fi	Ea	Me	Wa
Mother		X	X	X	X	X	Fi								
Child				X	X	X	X	X	Fi						
SameO			X	X	X	X	X								
SameX			X	X	X	X	X								
	Wa	Me	Ea	Fi	Wo	Wa	Me	Ea	Fi	Wo	Wa	Me	Ea	Fi	Wo
Friend						X	X	X	X	X	Fi				
Enemy					X	X	X	X	X	Wo	Fi				

Harmonizing element **Earth**

Life element **Metal**

See Note	Wo	Fi	Ea	Me	Wa	Wo	Fi	Ea	Me	Wa	Wo	Fi	Ea	Me	Wa
Mother			X	X	X	X	X	Ea							
Child					X	X	X	X	X	Ea					
SameO				X	X	X	X	X							
SameX				X	X	X	X	X							
	Wa	Me	Ea	Fi	Wo	Wa	Me	Ea	Fi	Wo	Wa	Me	Ea	Fi	Wo
Friend					X	X	X	X	X	Ea					
Enemy				X	X	X	X	X	Fi	Ea					

Harmonizing element **Metal**

Life element **Water**

See Note	Wo	Fi	Ea	Me	Wa	Wo	Fi	Ea	Me	Wa	Wo	Fi	Ea	Me	Wa
Mother				X	X	X	X	X	Me						
Child						X	X	X	X	X	Me				
SameO					X	X	X	X	X						
SameX					X	X	X	X	X						
	Wa	Me	Ea	Fi	Wo	Wa	Me	Ea	Fi	Wo	Wa	Me	Ea	Fi	Wo
Friend				X	X	X	X	X	Me						
Enemy			X	X	X	X	X	Ea	Me						

Harmonizing element **Water**

Life element **Wood**

See Note	Wo	Fi	Ea	Me	Wa	Wo	Fi	Ea	Me	Wa	Wo	Fi	Wo	Fi	Ea
Mother					X	X	X	X	X	Wa					
Child							X	X	X	X	X	Wa			
SameO						X	X	X	X	X					
SameX						X	X	X	X	X					
	Wa	Me	Ea	Fi	Wo	Wa	Me	Ea	Fi	Wo	Wa	Me	Ea	Fi	Wo
Friend			X	X	X	X	X	Wa							
Enemy		X	X	X	X	X	Me	Wa							

Harmonizing Mewa's

The harmonizing element from the Life rhombus is used for Life Mewa, Capacity Mewa, Fortune Mewa and Body Mewa. The relation for the Life Mewa (or capacity Mewa when local tradition is selected) is towards the Life rhombus. The relation between the other Mewa's is towards the Life Mewa (or capacity Mewa when local tradition is selected).

Mother / Child / SameO / SameX

In a mother, child sameO or sameX relation the sequence from inside to outside is a child sequence.

Start with the calculated element and do all other elements.

E.g. start element followed by child sequence

Wood (green), Fire (red), Earth (yellow), Metal (white), Water (blue)

Fire (red) – Earth (yellow) – Metal (white) – Water (blue) - Wood (green)

Earth (yellow) – Metal (white) – Water (blue) - Wood (green) – Fire (red)

Metal (white) – Water (blue) - Wood (green) – Fire (red) -
Earth (yellow)
Water (blue) - Wood (green) – Fire (red) - Earth (yellow) -
Metal (white)

Enemy / Friend

In an enemy / friend relation the sequence from inside to outside is a mother sequence.
Start with the calculated element and do all other elements.

E.g. start element followed by mother sequence
Water (blue)- Wood (green) - Fire (red) - Earth (yellow) -
Metal (white)
Metal (white) - Earth (yellow) - Fire (red) - Wood (green) -
Water (blue)
Earth (yellow) - Fire (red) - Wood (green) - Water (blue) -
Metal (white)
Fire (red) - Wood (green) - Water (blue) - Metal (white) - Earth
(yellow)
Wood (green) - Water (blue) - Metal (white) - Earth (yellow) -
Fire (red)

Explanation

The first step is to look after the Mewa relations. For the Life Mewa to the Life Element. For the Body, Capacity and Fortune Mewa to the Life Mewa.

To harmonize the outer element of the Element Life Rhombus is used. The first element in the calculated Mewa sequence is compared with the outer element of the Element Life giving a Same, Child, Friend, Enemy or Mother relation for Mother, Child, Same X and Same O Mewa relations. The relations Same FE, Child FE, Friend FE, Enemy FE or Mother FE relation in case of a Friend or Enemy Mewa relation.

Mewa relations Mother, Child and Same (XO)

Same

When the first element (1) in the calculate Mewa sequence is the Same as the harmonizing element add the sequence followed by the harmonizing element.

E.g. 1918 Earth Horse harmonizing element is Wood(0).
Life Mewa Red 7. Capacity mewa is Green (4). Relation Mother.

Child

When the first element (1) in the sequence is the Child of the harmonizing element just add the sequence. The last element (5) in the sequence is the harmonizing element.

E.g. 1966 Fire Horse harmonizing element is Wood(0).
Life Mewa Green 4. Body Mewa is Red 7. Relation Child

Friend

When the first element (1) is the Friend of the harmonizing element add the harmonizing element to the sequence. The fourth element (4) in the sequence is the harmonizing element.

E.g. 2025 Wood Snake harmonizing element is Wood(0).
Life Mewa is White 8. The Capacity Mewa is Yellow 5.
Relation Mother.

Enemy

When the first element (1) is the Enemy of the harmonizing element add the fourth (4) and the third (3) elements. The third element (3) in the sequence is the harmonizing element.

E.g. 1977 Fire Snake harmonizing element is Wood(0).
Life Mewa Black 2. Capacity Mewa is White(8). Relation
Mother.

Mother

When the first (1) element is the Mother of the harmonizing element add the first (1) and the second (2) element in the sequence. The second element (2) in the sequence is the harmonizing element.

E.g. 2002 Water Horse harmonizing element is Wood(0).
Life Mewa Green 4. Luck Mewa Black 2. Relation Mother.

Mewa relations Friend, Enemy

Same FE

When the first element (1) in the sequence is the Same as the harmonizing element add the sequence followed by the harmonizing element.

E.g. 1942 Water Horse harmonizing element is Wood(0).
Life Mewa White 1. Body Mewa Green 4. Relation Friend.

Mother FE

When the first element (1) in the sequence is the Mother of the harmonizing element just add the first and the last elements. The last element (5) in the sequence is the harmonizing element.

E.g. 1978 Earth Horse harmonizing element is Wood(0).
Life Mewa White 1. Body Mewa Green 4. Relation Friend.

Enemy FE

When the first element (1) is the Enemy of the harmonizing element add the harmonizing element to the sequence. The fourth element (4) in the sequence is the harmonizing element.

E.g. 1966 Fire Horse harmonizing element is Wood(0).
Life Mewa Green 4. Capacity Mewa White 1, Relation Enemy.

Friend FE

When the first (1) element is the Friend of the harmonizing element add the fourth (4) and the third (3) elements. The third element (3) in the sequence is the harmonizing element.

E.g. 1977 Fire Snake harmonizing element is Wood(0).
Life Mewa Black 2. Body Mewa Yellow 5. Relation Enemy.

Child FE

When the first (1) element is the Child of the harmonizing element add the first (1) and the second (2) element. The second element (2) in the sequence is the harmonizing element.

E.g. 1978 Earth Horse harmonizing element is Wood(0).
Life Mewa White 1. Capacity Mewa Red 7. Relation Enemy.

Harmonizing element **Wood**

Mewa relations Mother, Child, SameX, SameO												
Exp	Wo	Fi	Ea	Me	Wa	Wo	Fi	Ea	Me	Wa	Wo	
Same	X	X	X	X	X	Wo						
Child		X	X	X	X	X						
Friend			X	X	X	X	X	Wo				
Enemy				X	X	X	X	X	Fi	Wo		
Mother					X	X	X	X	X	Wa	Wo	
Mewa relations Friend, Enemy												
Exp	Wa	Me	Ea	Fi	Wo	Wa	Me	Ea	Fi	Wo	Wa	
Mother FE	X	X	X	X	X	Wa	Wo					
Enemy FE		X	X	X	X	X	Wo					
Friend FE			X	X	X	X	X	Wa	Wo			
Child FE				X	X	X	X	X	Fi	Wo		
Same FE					X	X	X	X	X	Wo		

Harmonizing element **Fire**

Mewa relations Mother, Child, SameX, SameO												
Exp	Wo	Fi	Ea	Me	Wa	Wo	Fi	Ea	Me	Wa	Wo	
Mother	X	X	X	X	X	Wo	Fi					
Same		X	X	X	X	X	Fi					
Child			X	X	X	X	X					
Friend				X	X	X	X	X	Fi			
Enemy					X	X	X	X	X	Ea	Fi	
Mewa relations Friend, Enemy												
Exp	Wa	Me	Ea	Fi	Wo	Wa	Me	Ea	Fi	Wo	Wa	
Enemy FE	X	X	X	X	X	Fi						
Friend FE		X	X	X	X	X	Wo	Fi				
Child FE			X	X	X	X	X	Ea	Fi			
Same FE				X	X	X	X	X	Fi			
Mother FE					X	X	X	X	X	Wo	Fi	

Harmonizing element **Earth**

Mewa relations Mother, Child, SameX, SameO											
Exp	Wo	Fi	Ea	Me	Wa	Wo	Fi	Ea	Me	Wa	Wo
Enemy	X	X	X	X	X	Me	Ea				
Mother		X	X	X	X	X	Fi	Ea			
Same			X	X	X	X	X	Ea			
Child				X	X	X	X	X			
Friend					X	X	X	X	X	Ea	
Mewa relations Friend, Enemy											
Exp	Wa	Me	Ea	Fi	Wo	Wa	Me	Ea	Fi	Wo	Wa
Friend FE	X	X	X	X	X	Fi	Ea				
Child FE		X	X	X	X	X	Me	Ea			
Same FE			X	X	X	X	X	Ea			
Mother FE				X	X	X	X	X	Fi	Ea	
Enemy FE					X	X	X	X	X	Ea	

Harmonizing element **Metal**

Mewa relations Mother, Child, SameX, SameO											
Exp	Wo	Fi	Ea	Me	Wa	Wo	Fi	Ea	Me	Wa	Wo
Friend	X	X	X	X	X	Me					
Enemy		X	X	X	X	X	Wa	Me			
Mother			X	X	X	X	X	Ea	Me		
Same				X	X	X	X	X	Me		
Child					X	X	X	X	X		
Mewa relations Friend, Enemy											
Exp	Wa	Me	Ea	Fi	Wo	Wa	Me	Ea	Fi	Wo	Wa
Child FE	X	X	X	X	X	Wa	Me				
Same FE		X	X	X	X	X	Me				
Mother FE			X	X	X	X	X	Ea	Me		
Enemy FE				X	X	X	X	X	Me		
Friend FE					X	X	X	X	X	Ea	Me

Harmonizing element **Water**

Mewa relations Mother, Child, SameX, SameO											
Exp	Wo	Fi	Ea	Me	Wa	Wo	Fi	Ea	Me	Wa	Wo
Child	X	X	X	X	X						
Friend		X	X	X	X	X	Wa				
Enemy			X	X	X	X	X	Wo	Wa		
Mother				X	X	X	X	X	Me	Wa	
Same					X	X	X	X	X	Wa	
Mewa relations Friend, Enemy											
Exp	Wa	Me	Ea	Fi	Wo	Wa	Me	Ea	Fi	Wo	Wa
Same FE	X	X	X	X	X	Wa					
Mother FE		X	X	X	X	X	Me	Wa			
Enemy Fe			X	X	X	X	X	Wa			
Friend FE				X	X	X	X	X	Me	Wa	
Child FE					X	X	X	X	X	Wo	Wa

Examples:

All examples are for Male, Astrological year, Traditional Mewa calculation, Traditional Fortune calculation.

1918 Earth Horse harmonizing element is Wood(0).

Life Mewa Red 7 Fire. Life element Fire. Relation Same X.

See: Harmonizing towards Life, Harmonizing element Wood.

Capacity mewa is Green 4 Wood. Life Mewa Red 7 Fire.

Mewa relation Mother. Harmonizing Wood with Wood is Same.

Body mewa White 1 Metal. Life Mewa Red 7 Fire. Mewa relation Friend. Harmonizing Wood with Metal is Enemy FE.

Fortune mewa Yellow 5 Earth. Life Mewa Red 7 Fire. Mewa relation Child. Harmonizing Wood with Earth is Friend.

1966 Fire Horse harmonizing element is Wood(0).

Life Mewa Green 4 Wood. Life element Fire. Relation Mother.
See: Harmonizing towards Life, Harmonizing element Wood.

Capacity mewa White 1 Metal. Life Mewa Green 4 Wood.
Mewa relation Enemy. Harmonizing Wood with White 1 Metal
is Enemy FE.

Body Mewa is Red 7 Fire. Life Mewa Green 4 Wood. Mewa
relation Child. Harmonizing Wood with Fire is Child.

Fortune mewa White 8 Metal. Life Mewa Green 4 Wood.
Mewa relation Enemy. Harmonizing Wood with Metal is
Enemy FE.

2025 Wood Snake harmonizing element is Wood(0).

Life Mewa White 8 Metal. Life element Fire. Relation Friend.
See: Harmonizing towards Life, Harmonizing element Wood.

Capacity Mewa Yellow 5 Earth. Life Mewa White 8 Metal.
Mewa relation Mother. Harmonizing Wood with Earth is
Friend.

Body Mewa Black2 Water. Life Mewa White 8 Metal. Mewa
relation Same X. Harmonizing Wood with Water is Mother.

Fortune Mewa White 8 Metal. Life Mewa White 8 Metal.
Mewa relation Same X. Harmonizing Wood with Metal is
Enemy.

1977 Fire Snake harmonizing element is Wood(0).

Life Mewa Black 2 Water. Life element Fire. Relation Enemy.
See: Harmonizing towards Life, Harmonizing element Wood.

Capacity Mewa White 8 Metal. Life Mewa Black 2 Water.
Mewa relation Mother. Harmonizing Wood with Metal is
Enemy.

Body Mewa Yellow 5 Earth. Life Mewa Black 2 Water. Mewa
relation Enemy. Harmonizing Wood with Earth is Friend FE.

Fortune Mewa Yellow 5 Earth. Life Mewa Black 2 Water.
Mewa relation Enemy. Harmonizing Wood with Earth is
Enemy is Friend FE.

2002 Water Horse harmonizing element is Wood(0).

Life Mewa Green 4. Life element Fire. Relation Mother. See: Harmonizing towards Life, Harmonizing element Wood.

Capacity Mewa White 1 Metal. Life Mewa Green 4 Wood. Mewa relation Enemy. Harmonizing Wood with Metal is Enemy FE.

Body Mewa Red 7 Fire. Life Mewa Green 4 Wood. Mewa relation Child. Harmonizing Wood with Fire is Child.

Fortune Mewa Black 2 Water. Life Mewa Green 4 Wood. Mewa relation Mother. Harmonizing Wood with Water is Mother.

2000 Metal Dragon harmonizing element is Fire(1).

Life Mewa White 6 Metal. Life element Earth. Relation Child. See: Harmonizing towards Life, Harmonizing element Fire.

Capacity Mewa Blue 3 Water. Life Mewa White 6 Metal. Mewa relation Child. Harmonizing Fire with Water is Enemy.

Body Mewa Red 9 Fire. Life Mewa White 6 Metal. Mewa relation Enemy. Harmonizing Fire with Fire is Same FE.

Fortune Mewa White 8 Metal. Life Mewa White 6 Metal. Mewa relation Same X. Harmonizing Fire with Metal is Friend.

2004 Wood Monkey harmonizing element is Earth(2)

Life Mewa Black 2 Water. Life element Metal. Relation Child. See: Harmonizing towards Life, Harmonizing element Earth.

Capacity Mewa White 1 Metal. Life Mewa Black 2 Water. Mewa relation Mother. Harmonizing Earth with Metal is Child.

Body Mewa Yellow 5 Earth. Life Mewa Black 2 Water. Mewa relation Enemy. Harmonizing Earth with Earth is Same FE.

Fortune Mewa White 1 Metal. Life Mewa Black 2 Water.
Mewa relation Mother. Harmonizing Earth with Metal is Child.

2007 Fire Pig harmonizing element is Metal(3)

Life Mewa White 8 Metal. Life element Water. Relation
Mother. See: Harmonizing towards Life, Harmonizing element
Metal.

Capacity Mewa Yellow 5 Earth. Life Mewa White 8 Metal.
Mewa relation Mother. Harmonizing Metal with Earth is
Mother.

Body Mewa Black 2 Water. Life Mewa White 8 Metal. Mewa
relation Child. Harmonizing Metal with Water is Child.

Fortune Mewa Yellow 5 Earth. Life Mewa White 8 Metal.
Mewa relation Mother. Harmonizing Metal with Earth is
Mother.

2010 Metal Tiger harmonizing element is Water(4)

Life Mewa Yellow 5 Earth. Life element Wood. Relation
Friend. See: Harmonizing towards Life, Harmonizing element
Water.

Capacity Mewa Black 2 Water. Life Mewa Yellow 5 Earth.
Mewa relation Friend. Harmonizing Water with Water is
Same.

Body Mewa White 8 Metal. Life Mewa Yellow 5 Earth. Mewa
relation Child. Harmonizing Water with Metal is Mother.

Fortune Mewa Black 2 Water. Life Mewa Yellow 5 Earth.
Mewa relation Friend. Harmonizing Water with Water is Same.